

Chain Valley and Mannering Collieries

Combined Community Consultative Committee
Meeting Presentation
16th August 2023



WELCOME AND APOLOGIES



Welcome

Apologies

Declaration of interests

Confirmation of previous minutes

AGENDA



- 1. Actions from previous meeting**
- 2. Correspondence**
- 3. Operational update**
- 4. Approvals**
- 5. Business Arising**
- 6. Environmental Incidents / Non-compliances**
- 7. Environmental Performance**
- 8. Community Complaints & Enquiries**
- 9. Update on Sewer Connection Projects**

ACTIONS / BUSINESS ARISING FROM PREVIOUS MINUTES



Action / Business Arising	Action Owner	Update
NW requested Seagrass Monitoring Locations near Vales Point Power Station	LM	Included in slide 9 – Business Arising

Correspondence since previous meeting

- 19/06/23 – email LM to NW map of seagrass monitoring
- 23/06/23 – emails DPE/MMH/ to CCC on revised CCC guidelines
- 26/06/23 – emails EB/MMH/CCC on EOI for CVC Community Advisory Panel
- 02/08/23 – email MMH to CCC TOR

OPERATIONAL UPDATE

Production

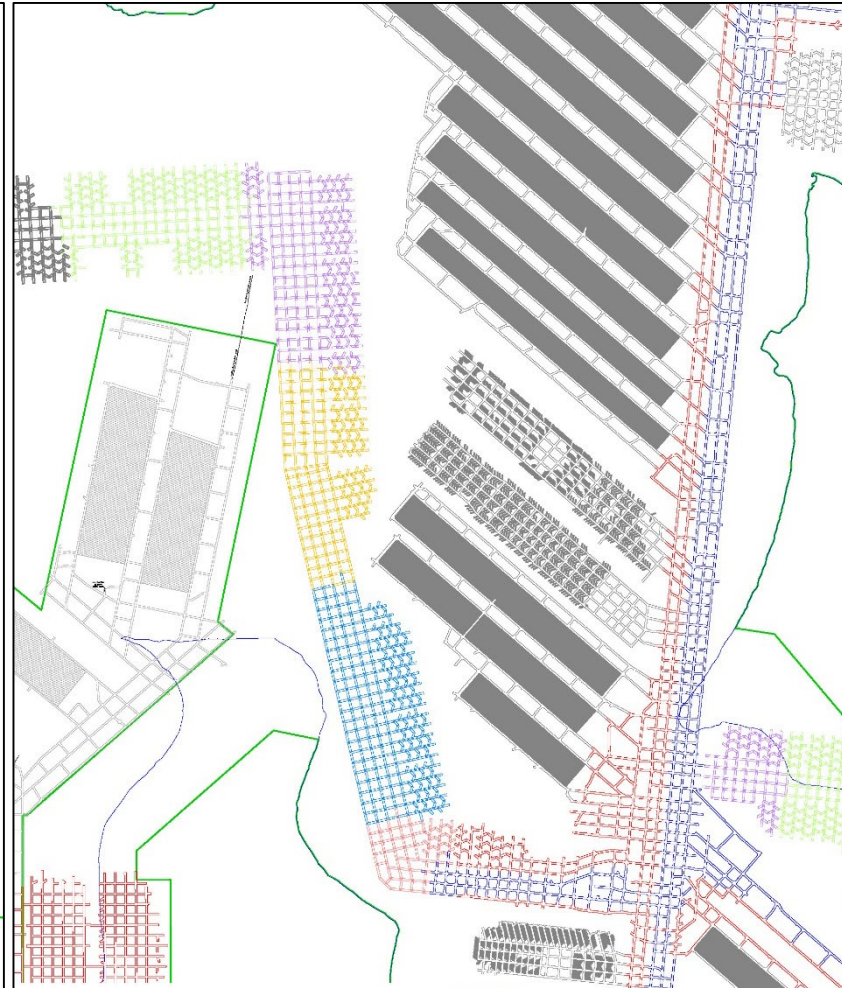
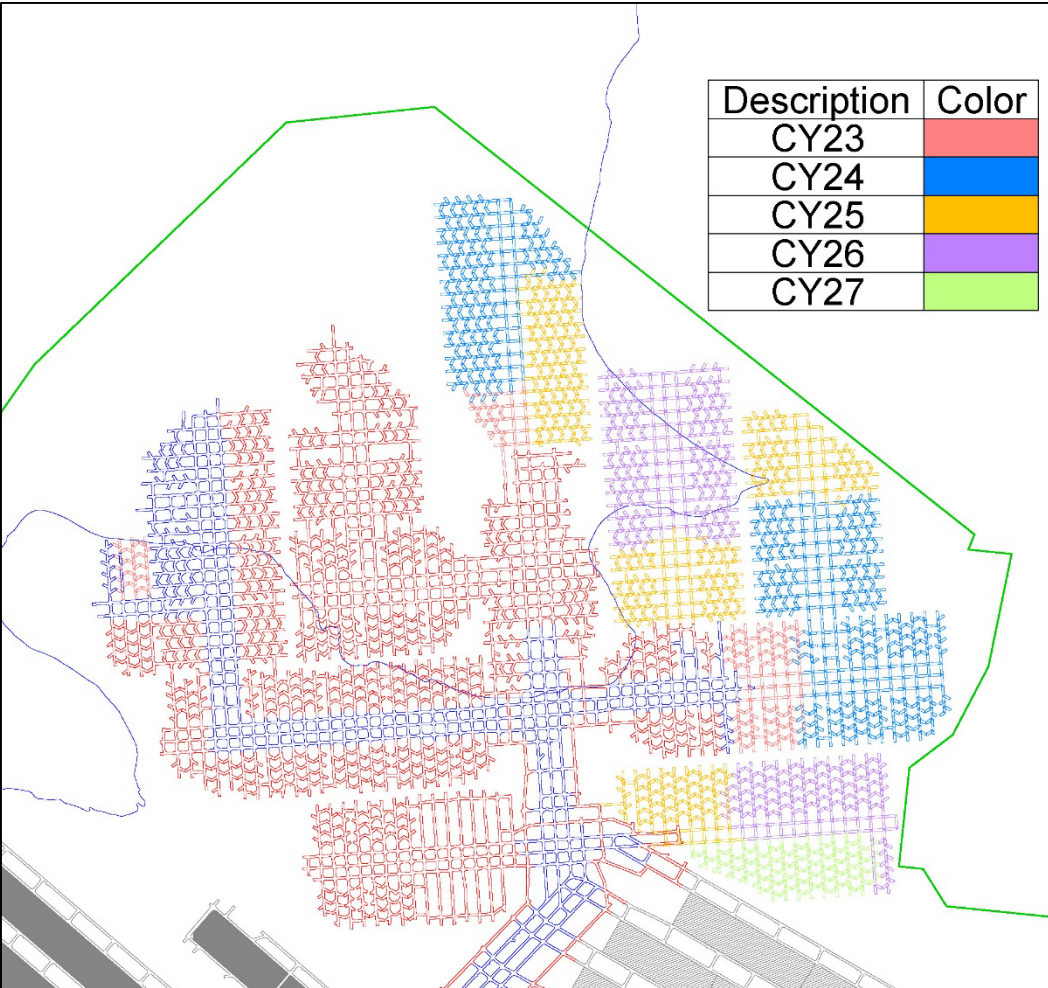
- Production panels relocated from W4 and W5 to to W6 and E2 panels
- MA1 drivage continues with first workings panels.
- Production 1 May 2023 to 31 July 2023 was 257,000 t ROM Coal.
- All coal delivered to Power Station



OPERATIONAL UPDATE FORWARD PLAN *(draft)*



Description	Color
CY23	Red
CY24	Blue
CY25	Yellow
CY26	Purple
CY27	Green



Current Approvals

Chain Valley Colliery

- EPL1770: Environmental Protection License - June 2023
- CVC SSD-5465 (MOD 4): Development Consent – August 2021
- Extraction Plan: MWS5 and NPA – March 2021

Mannering Colliery

- EPL 191 – Mannering Colliery – April 2021
- Mannering Colliery Project Approval PA 06_0311 (MOD 5) – June 2020

CONSENT CONSOLIDATION PROJECT



The project status on the Major Projects Planning Portal is unchanged from the previous CCC meeting, Delta Coal is submitting a RFI response for Subsidence in the Mannering Lease area.

DPE referred the project for opinion from the 'Independent Expert Advisory Panel for Mining', who have requested a presentation from Delta Coal to address queries on the project regarding conceptual mine design and greenhouse gas.


State Significant Development

Assessment

Chain Valley Colliery Consolidation Project

Central Coast, Lake Macquarie City

Current Status: More Information Required Interact with the stages for their names ?



1. NSW DPE prepare an assessment report on the EIS
2. The approval of the project is referred to IPC
3. IPC invites an additional round of public submissions
4. IPC undertake additional consultation with stakeholders as provided
5. IPC undertake a site visit
6. IPC hold a public meeting
7. IPC makes a determination on the project

BUSINESS ARISING – SEAGRASS MONITORING

- Request from NW to provide information on Seagrass Monitoring locations for Delta Coal, focusing on monitoring near the VPPS inlet.
- Annual monitoring information publicly available on Delta Coal website.
- L1 monitoring commenced in 2015 (CVC-MC UG Link Road). Results have ranged between 99.12% to 94.63% seagrass coverage.



ENVIRONMENTAL INCIDENTS / NON- COMPLIANCES



Summary of Incidents and Non-compliances

Site	Date	Incident / Non-compliance Type
CVC	15 June 2023	Puncture of existing Mannering Park sewer main during CVC sewer installation project.

ENVIRONMENTAL INCIDENTS / NON- COMPLIANCES

Puncture of Sewer Pipeline 15/06/2023

During installation of the CVC sewer connection, interception of a sewage pipe occurred.

Works were being undertaken by the sewer installation contractor, who immediately notified Council and ordered a Vac truck to site. A pit was dug to divert and contain spillage. Delta Coal provided an incident report to the NSW EPA.

No lasting effects were identified during sampling of the nearby creek system.



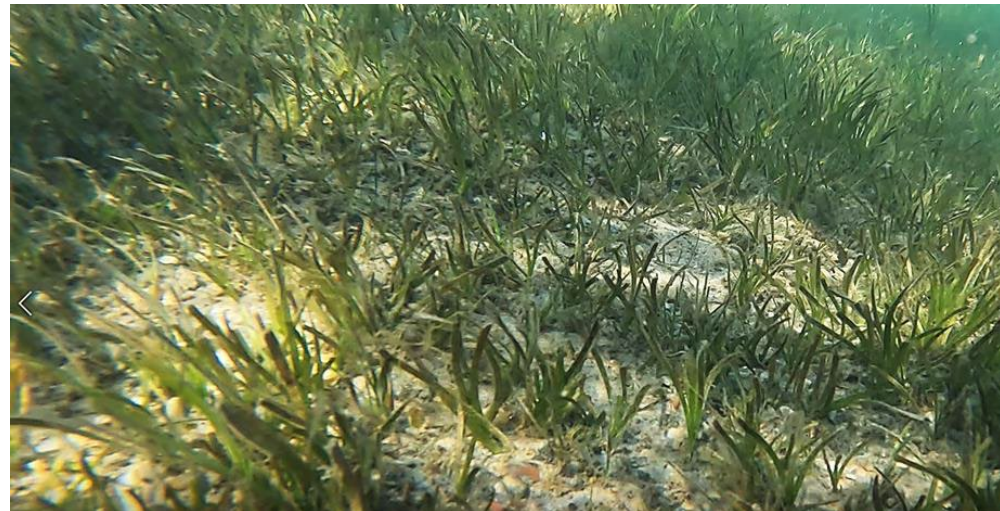
ENVIRONMENTAL PERFORMANCE



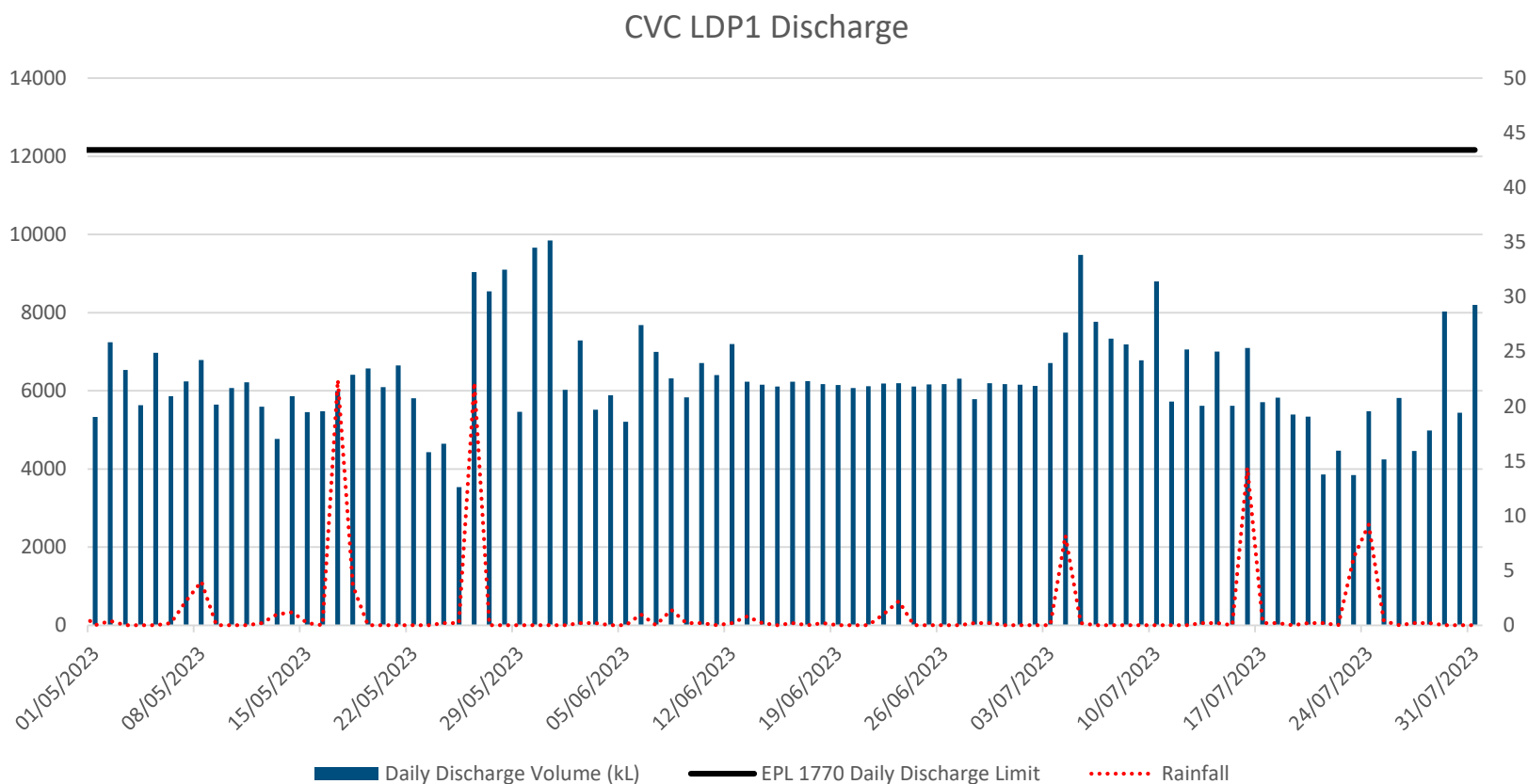
Annual Seagrass Monitoring was undertaken in June 2023.

No impact was observed to seagrass as a result of mining induced subsidence.

Seagrass percentage cover was similar to that of 2022 annual monitoring results.



CVC Surface Water Daily Discharge and Rainfall Volumes



ENVIRONMENTAL PERFORMANCE

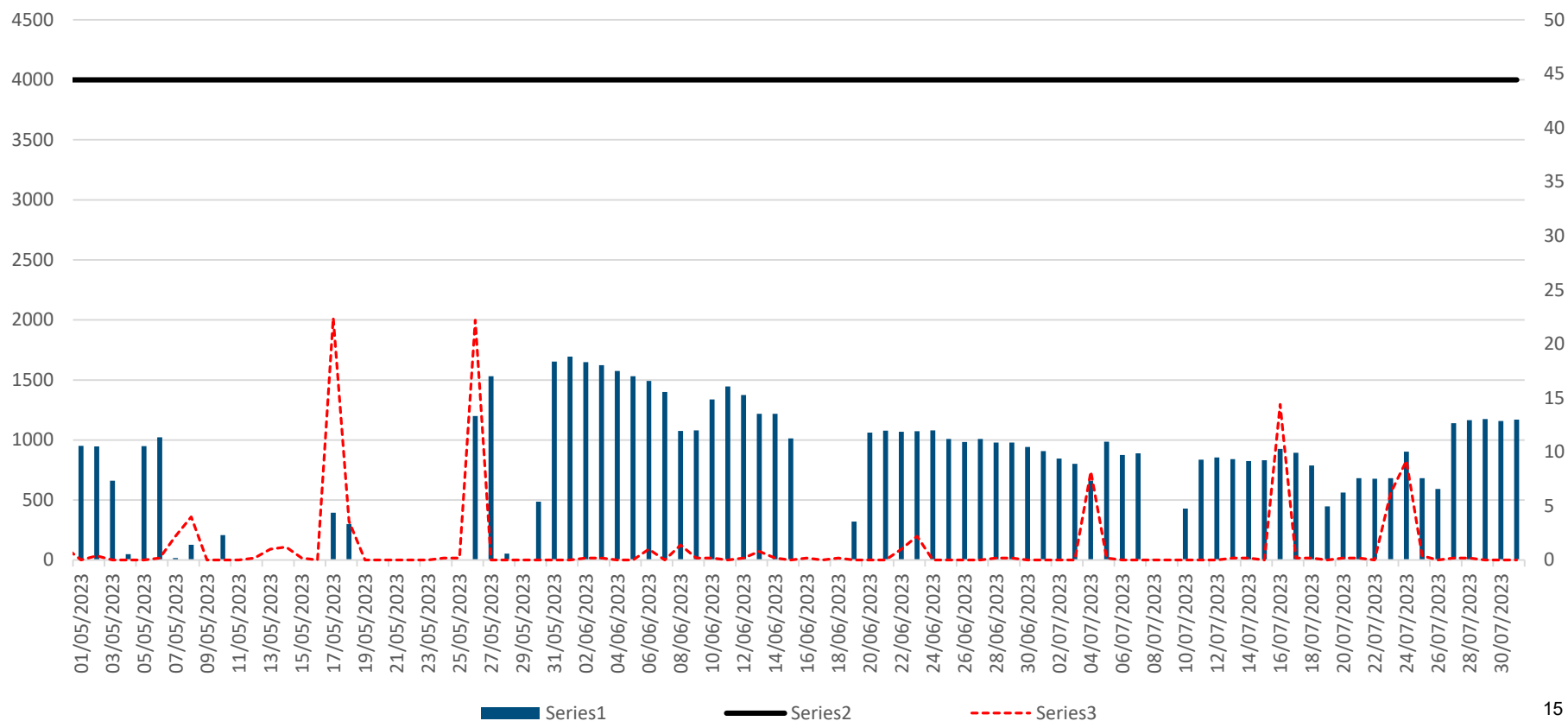


CVC Surface Water Quality Monitoring

LDP1	Limits	May - 2023	Jun - 2023	Jul - 2023
Faecal Coliforms (CFU/100ml)	200	60	~13	~9
Enterococcus CFU/100ml	40 Primary Contact (NHMRC 2008) 150 Secondary Contact (NHMRC)	45	27	~2
pH (pH Units)	6.5-8.5	7.74	7.76	7.84
Total Suspended Solids (mg/kg)	50	<5	<5	22

MC Surface Water Daily Discharge Volume and Rainfall Volumes

Manning Colliery - Surface Water Daily Discharge Volumes and Rainfall



ENVIRONMENTAL PERFORMANCE



MC Surface Water Quality Monitoring

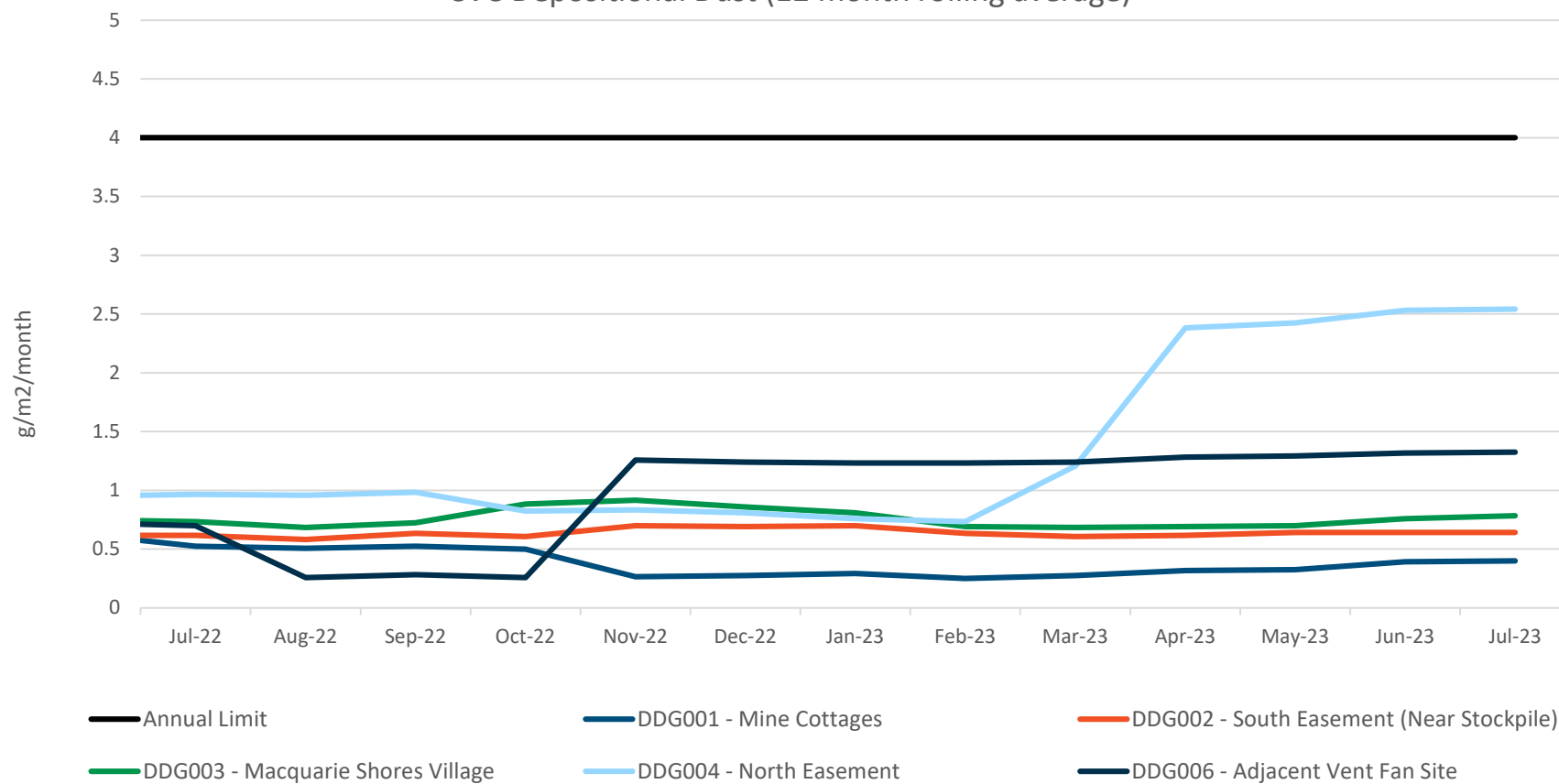
LDP1	Limits	May-2023 Average	Jun-2023 Average	Jul-2023 Average
Oil & Grease mg/L	10	<5	<5	<5
TSS mg/L	50	10.5	5.5	11.2
pH	6.5-8.5	7.98	7.94	8.0

ENVIRONMENTAL PERFORMANCE



CVC Depositional Dust Monitoring

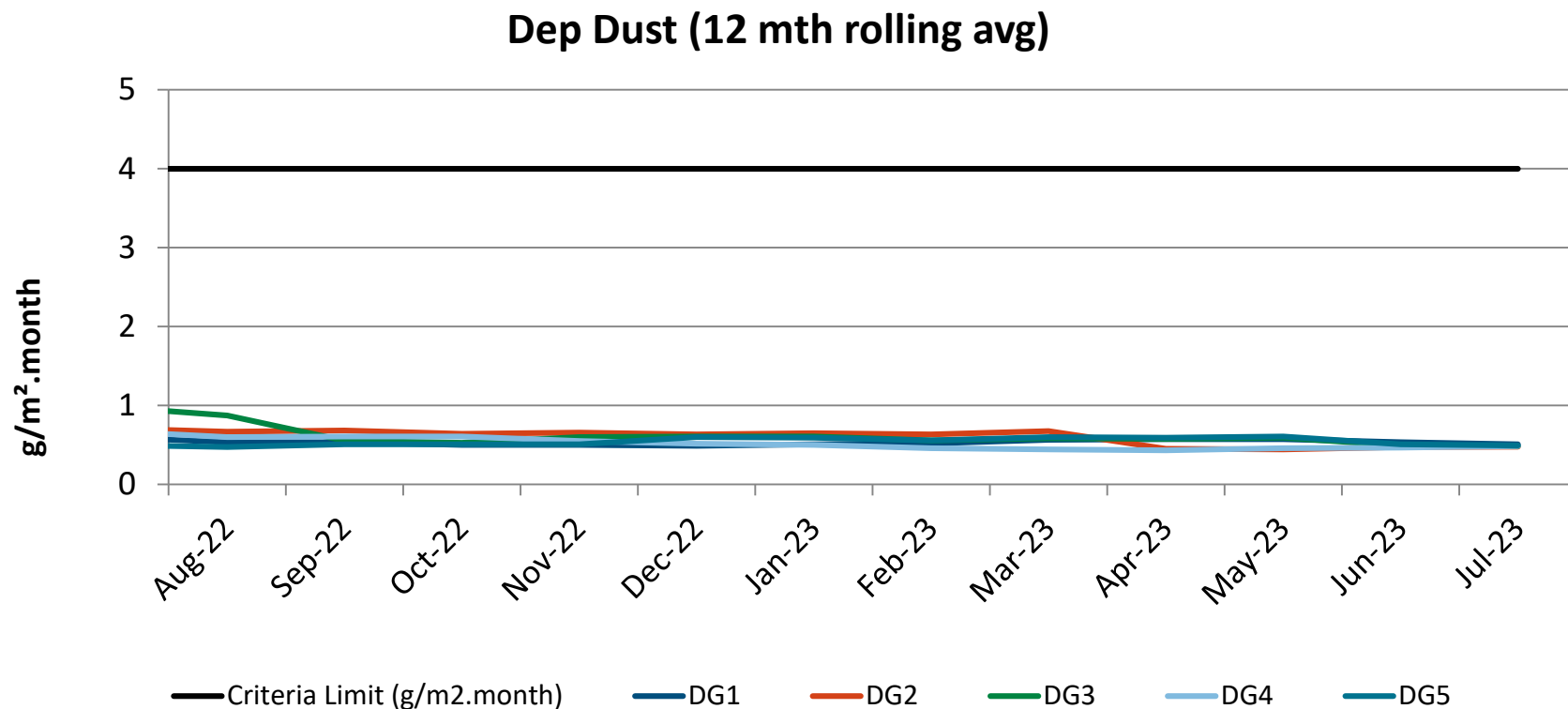
CVC Depositional Dust (12 month rolling average)



ENVIRONMENTAL PERFORMANCE



MC Depositional Dust Monitoring

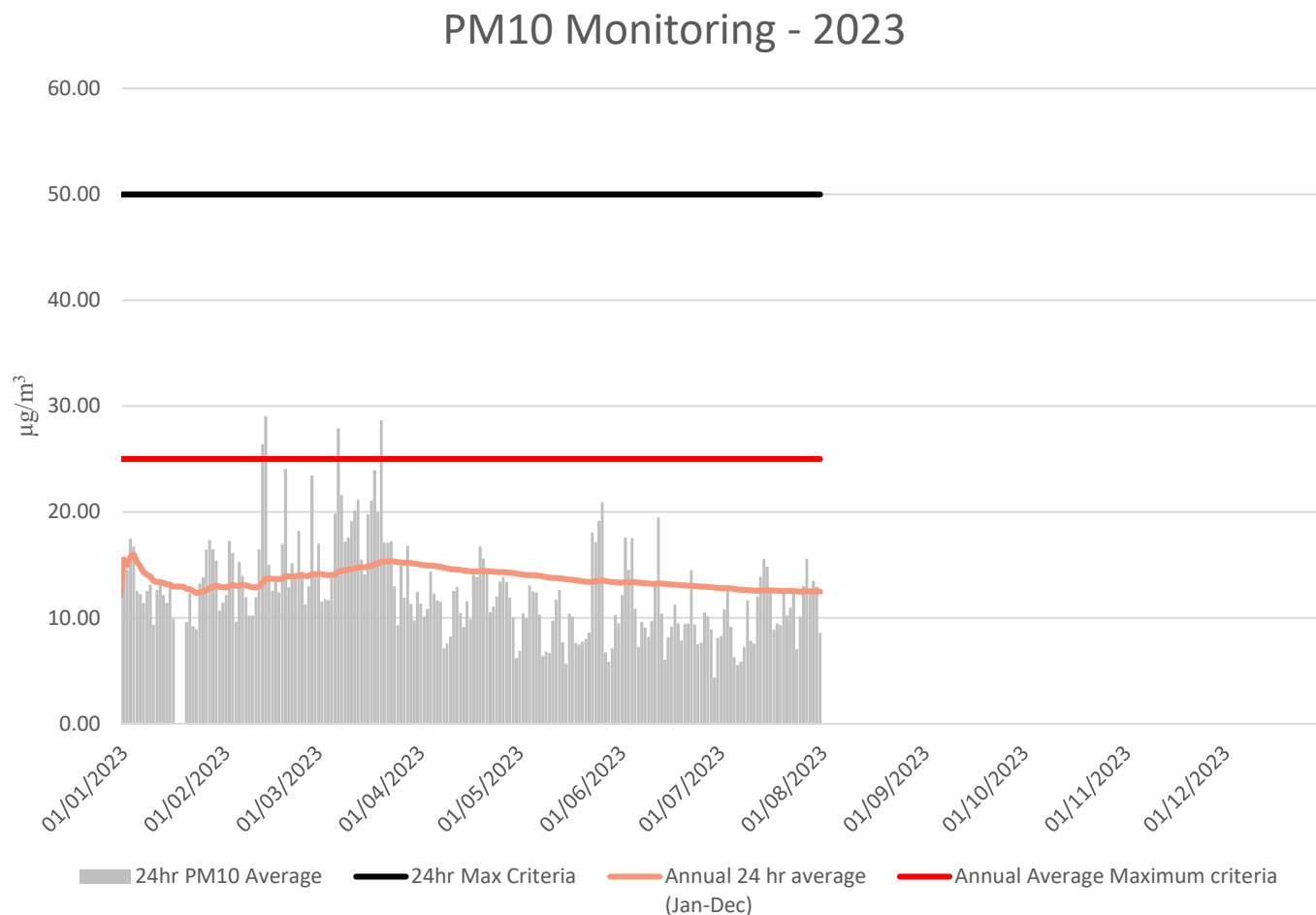


ENVIRONMENTAL PERFORMANCE



PM₁₀ Monitoring

No exceedances of the average annual or 24hr criteria have been observed within the last 12 months.

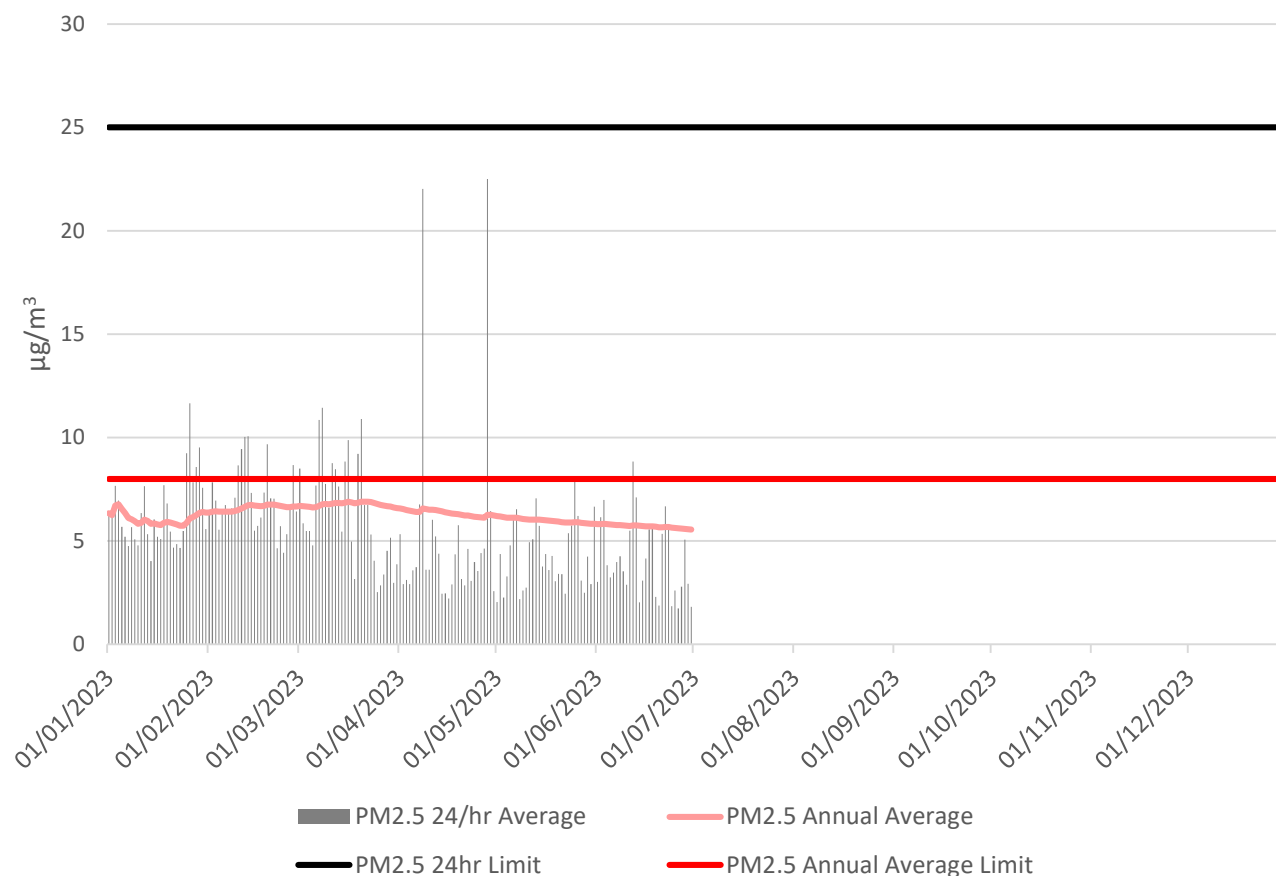


PM_{2.5} Monitoring

There were no exceedances of the PM_{2.5} daily average limit year to date.

Data has been delayed by 1 month from VPPS for review by air quality consultant.

PM2.5 Monitoring - 2023

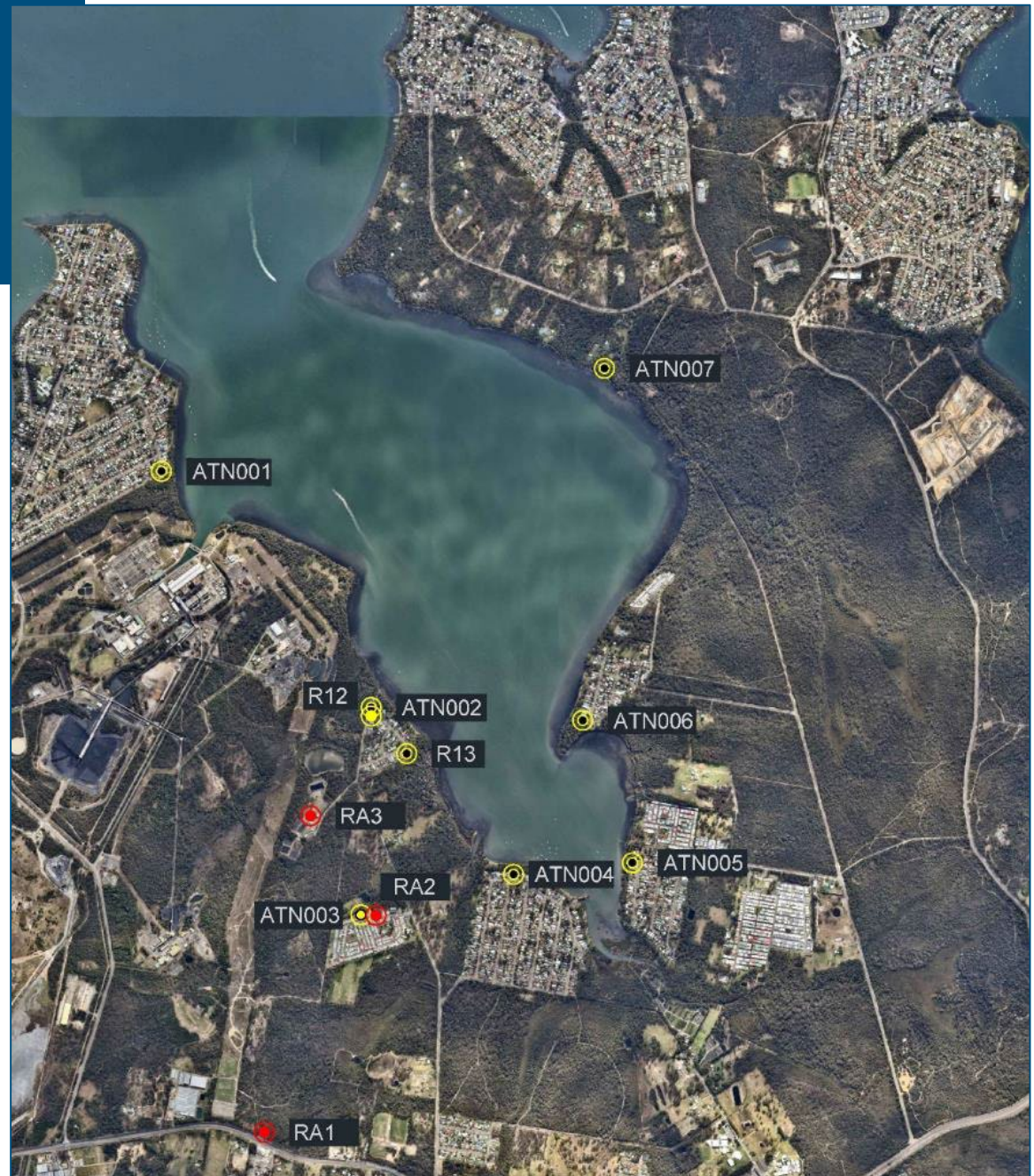


ENVIRONMENTAL PERFORMANCE

Noise Monitoring Locations

Red = MC
Monitoring Location

Yellow = CVC
Monitoring Location



ENVIRONMENTAL PERFORMANCE



Noise Monitoring – MC May–Jul 2023

No Exceedances for
MC noise monitoring
between May-Jul.

IA = Inaudible

Highest result
recorded during
monitoring for a
location is
presented.

Location	Date	Site Contributions, dB		Noise Limits, dB		Compliance status
		LAEQ	LAMAX	LAEQ	LAMAX	
May 2023						
RA1	22/05/2023	IA	IA	36	46	☑
RA2		<40	IA	40	45	☑
RA3		IA	IA	39	49	☑
June 2023						
RA1	19/06/2023	35	38	36	46	☑
RA2		<40	44	40	45	☑
RA3		IA	IA	39	49	☑
July 2023						
RA1	12/07/2023	IA	IA	36	46	☑
RA2		IA	IA	40	45	☑
RA3		IA	IA	39	49	☑

ENVIRONMENTAL PERFORMANCE



Noise Monitoring – CVC Q2 2023

Chain Valley Colliery Q2 2023 noise monitoring was undertaken on the 15, 19 and 21 June 2023.

The highest result for each monitoring location during the monitoring period is presented.

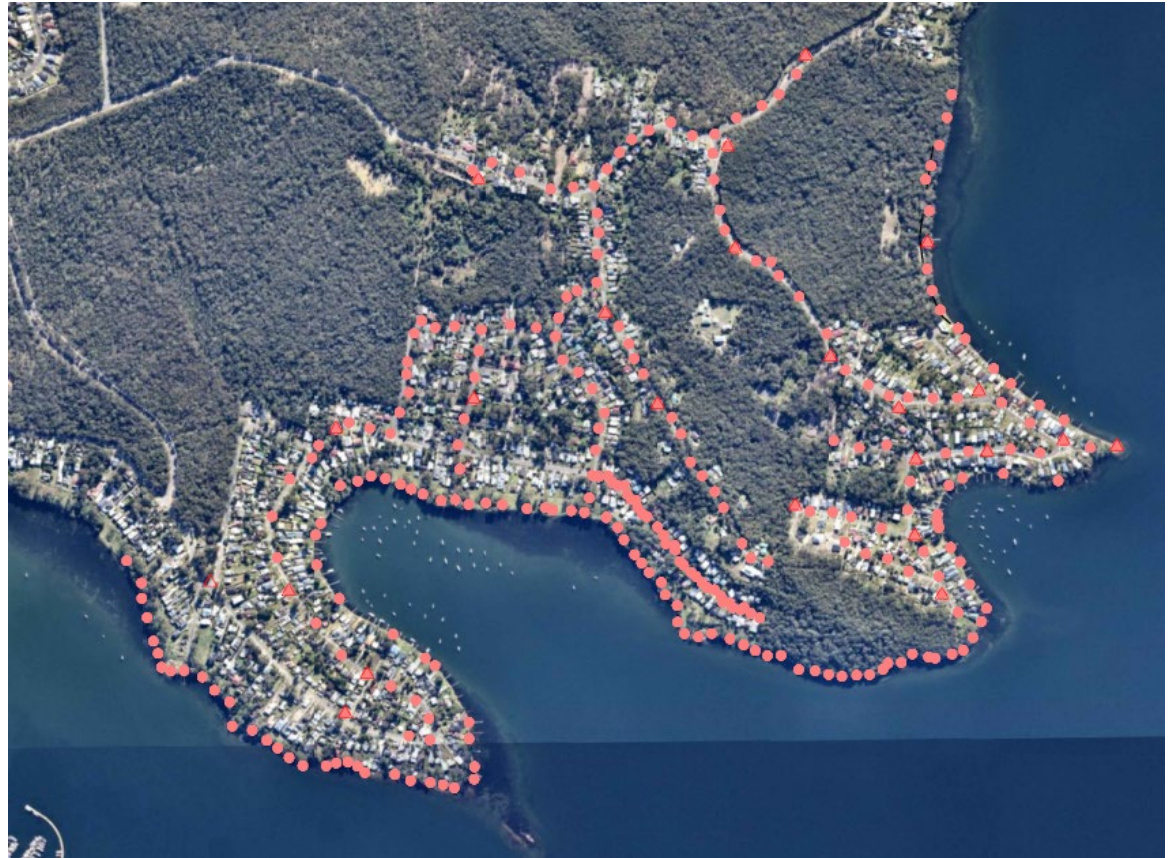
Monitoring Point	Site Contributions, dB		Noise Limit		Compliance Status
	LA _{EQ} (15 min)	LAMAX	LA _{EQ} (15 min)	LAMAX	
Chain Valley Colliery Q1 2023 (21 and 22 March 2023)					
ATN001	IA	IA	38	45	☑
ATN002	IA	IA	49	54	☑
ATN003	IA	IA	36	45	☑
ATN004	IA	IA	35	45	☑
ATN005	IA	IA	35	45	☑
ATN006	IA	IA	37	45	☑
ATN007	44 (39+5 LFN)	39	46	46	☑
R12	IA	IA	49	53	☑
R13	IA	IA	43	49	☑

ENVIRONMENTAL PERFORMANCE



Subsidence Monitoring

Quarterly subsidence monitoring undertaken for the northern mining area in June 2023. No exceedances of subsidence limits (20mm) observed.



Community Complaints between 1 May and 31 July 2023:

- Chain Valley Colliery - Nil community complaints received in period.
- Mannering Colliery - Nil community complaints received in period.

General Enquiries between 1 May and 31 July 2023:

- No enquiries received

ENVIRONMENTAL PROJECTS



CVC Sewer Connection project has been completed.

All effluent generated from CVC is pumped to the Council sewer system for treatment.

A completion report has been provided to the NSW EPA.



QUESTIONS